

Installation Instructions

1. Requirements

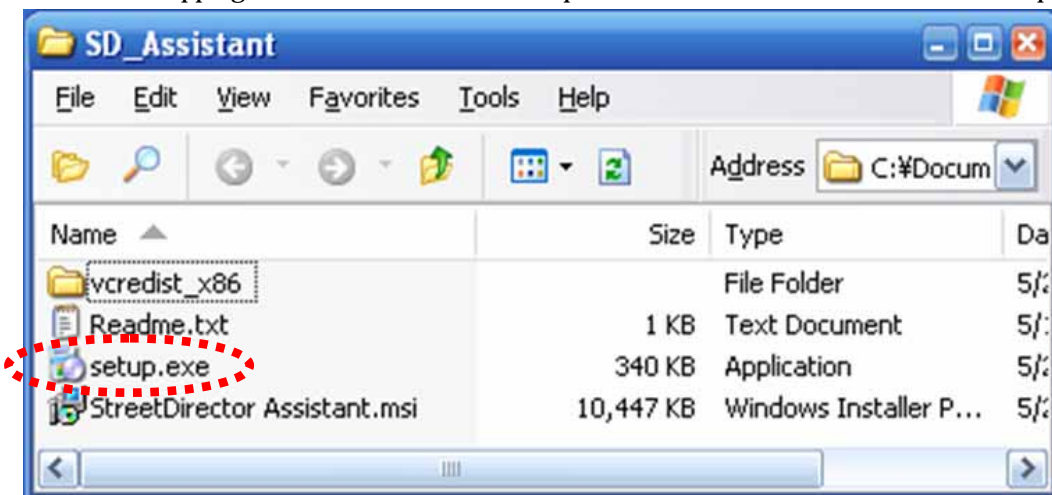
- * Recommended minimum hardware requirements:
 - Pentium IV @ 1GHz or better
 - 512MB RAM
 - Broadband internet connection (2Mbit or more)
- * Windows XP/Vista
- * Microsoft Internet Explorer 6 or better installed
- * SD-card + reader with at least 1 MB of free space

2. Installation

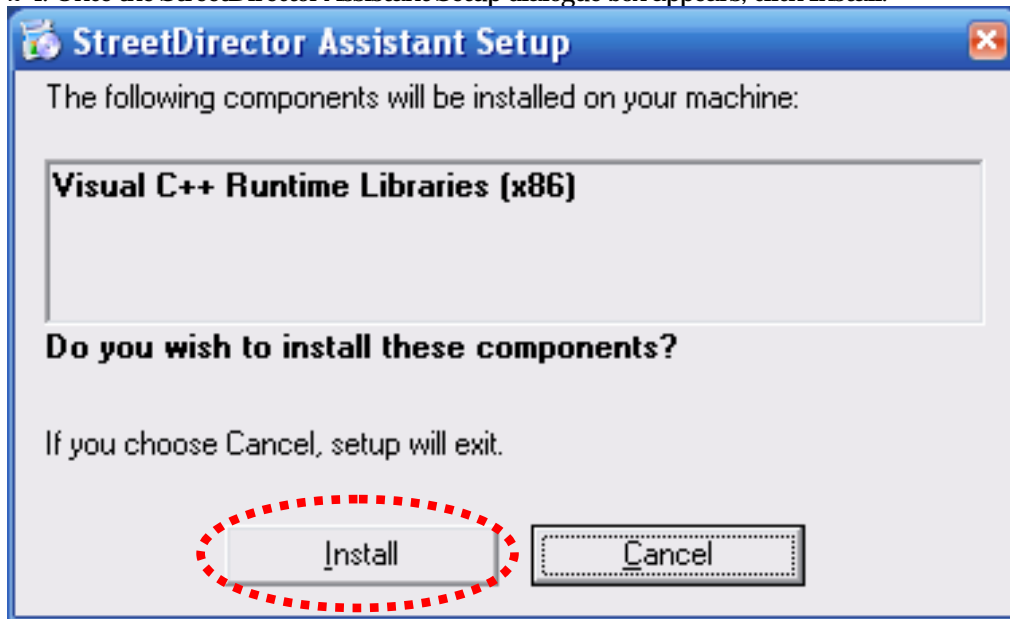
2-1. Download the file: "SD_Assistant_1.6. zip"

2-2. Unzip the file: "SD_Assistant_1.6. zip"

2-3. After unzipping the file, a new window will open similar to the one below. Run the "setup.exe" file.

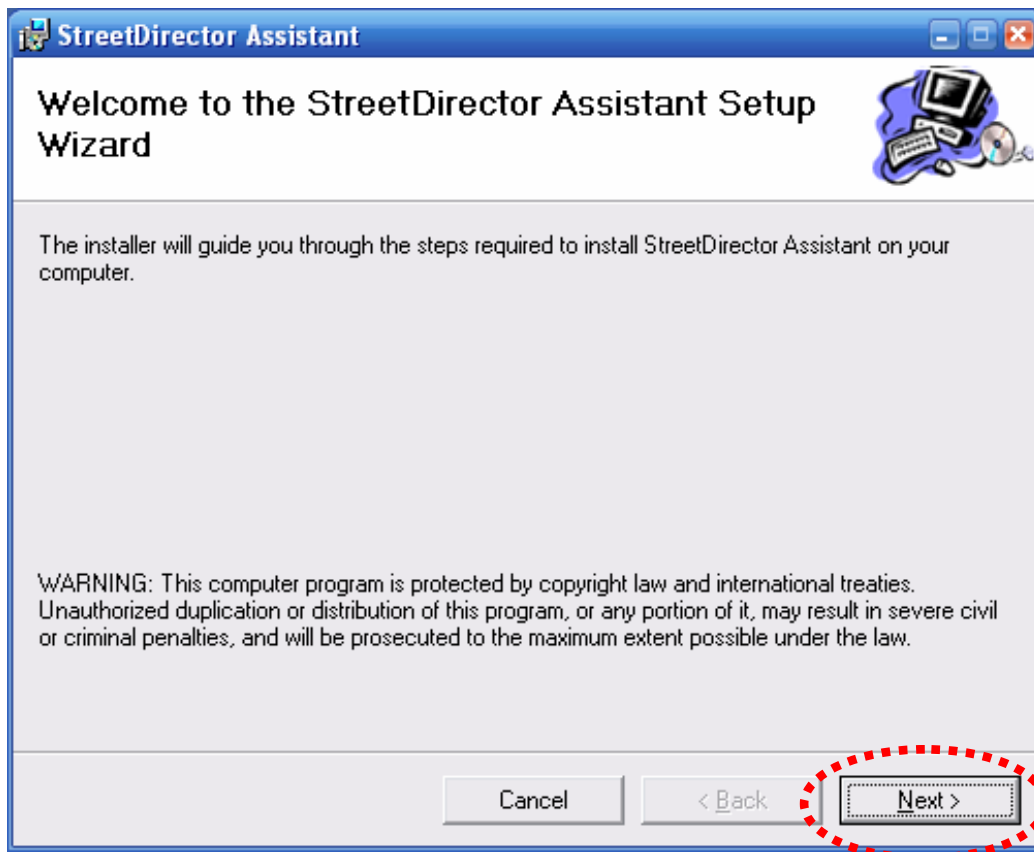


2-4. Once the StreetDirector Assistant Setup dialogue box appears, click Install.



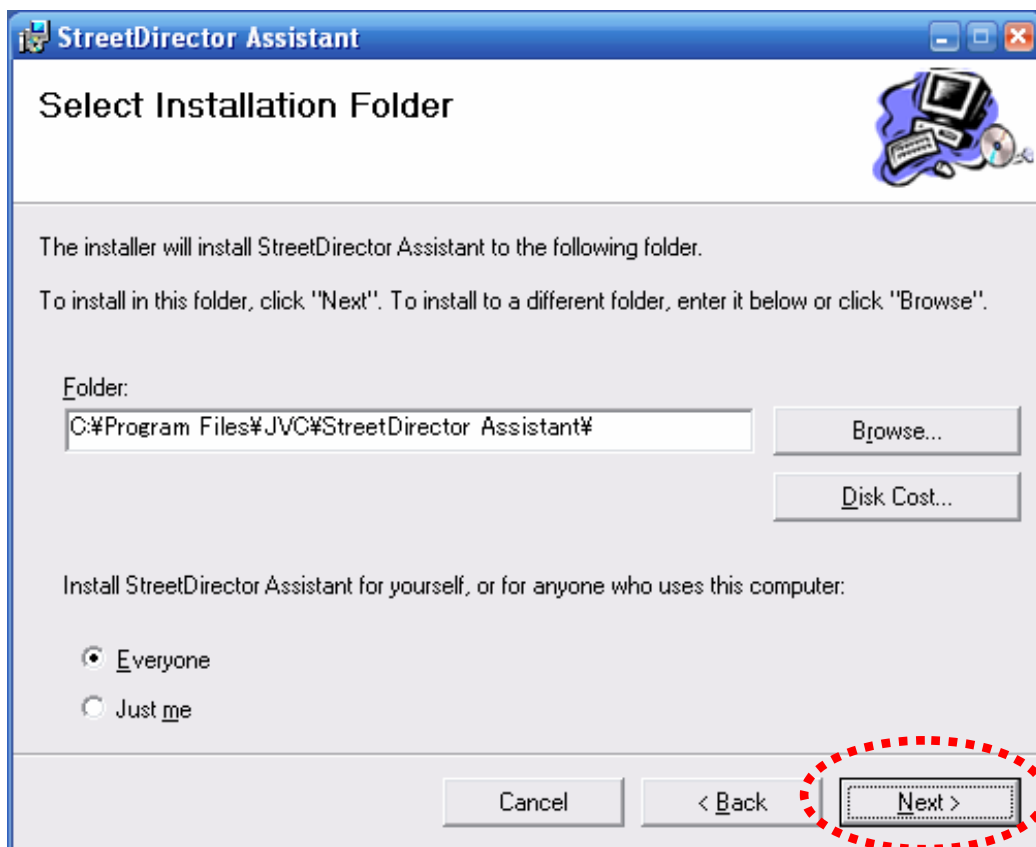
2-5. Wait for the Runtime Libraries to install.

2-6. When the Welcome to the StreetDirector Assistant Setup Wizard opens, click Next.

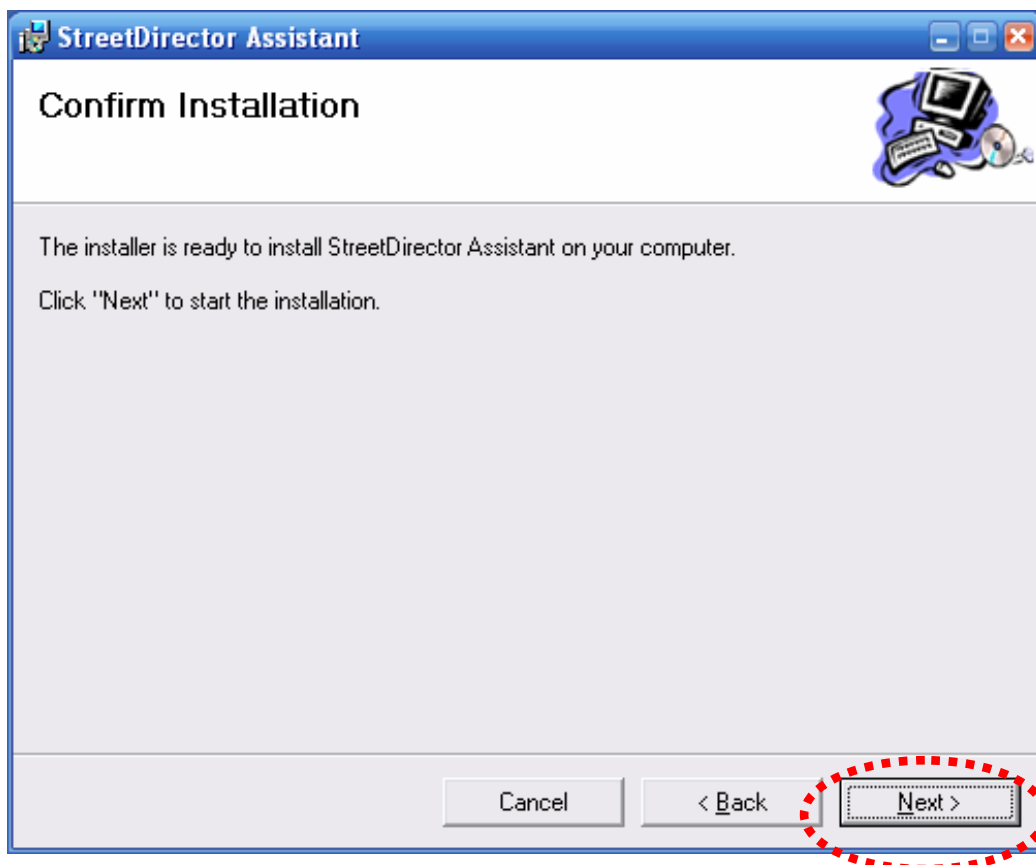


2-7. When prompted to Select Installation Folder, click Next.

*A shortcut will be created on your desktop and Start Menu. To install in a different location, select a folder on your computer as shown below.

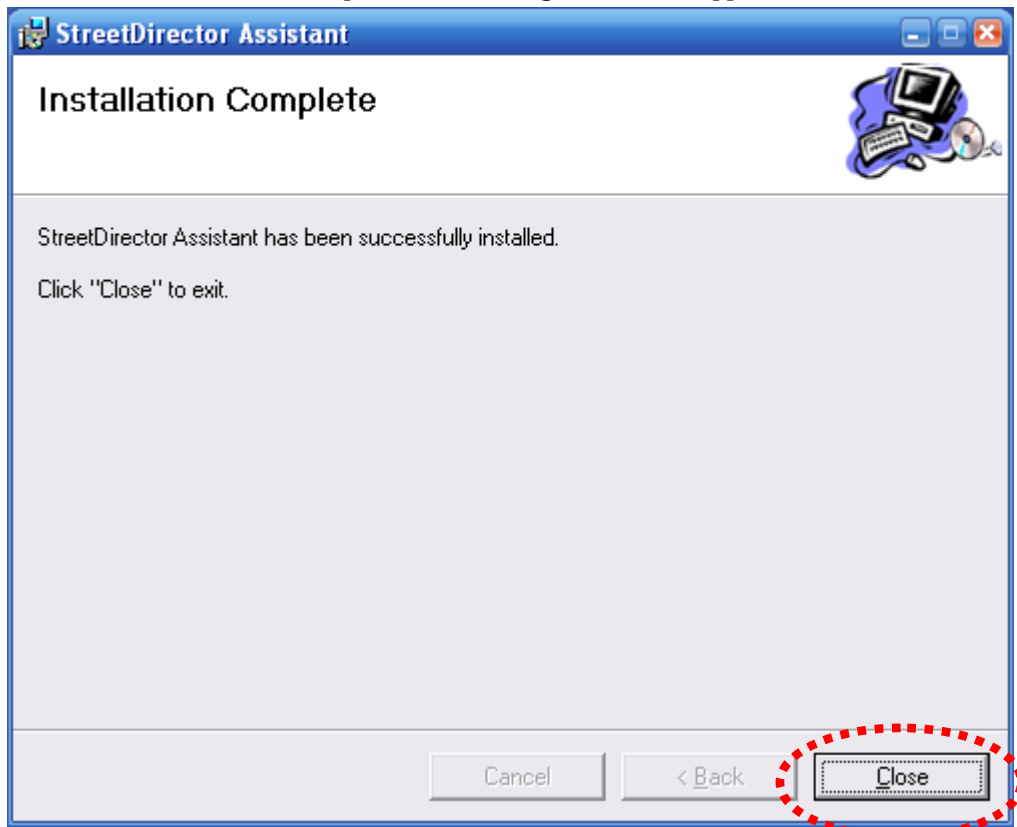


2-8. When prompted to Confirm Installation, click Next.



2-9. Wait for StreetDirector Assistant to install.

2-10. When installation is complete, the following window will appear. Click Close.



2-11. A shortcut will have been created on your desktop. Use this shortcut to run StreetDirector Assistant.

