

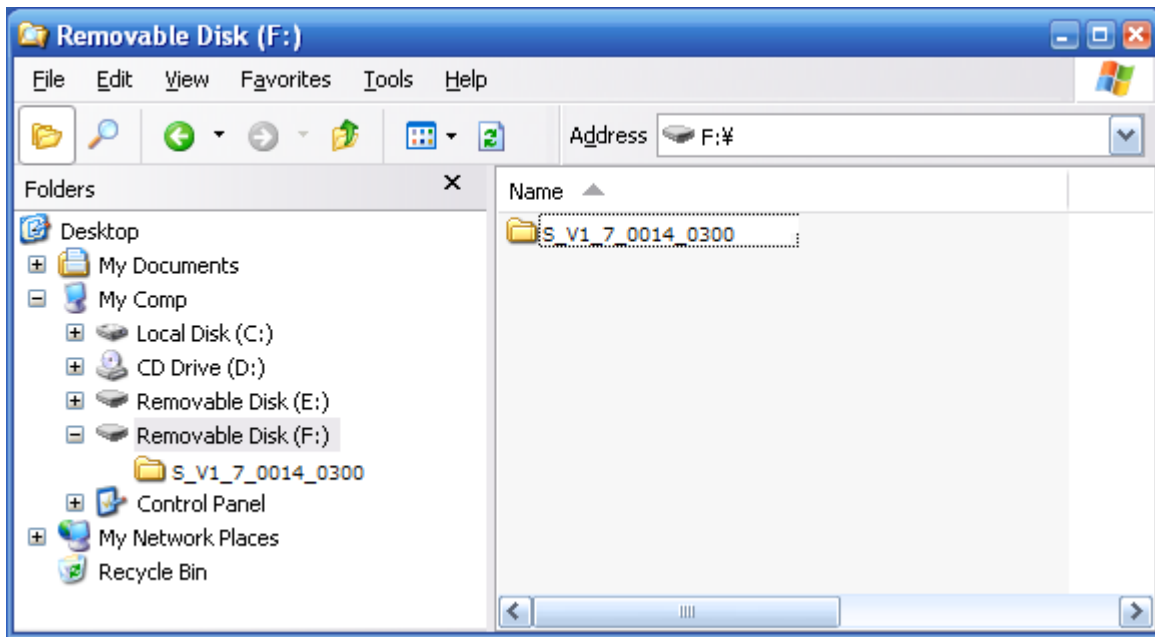
KW-NT700/300

Firmware Update

1. Preparation

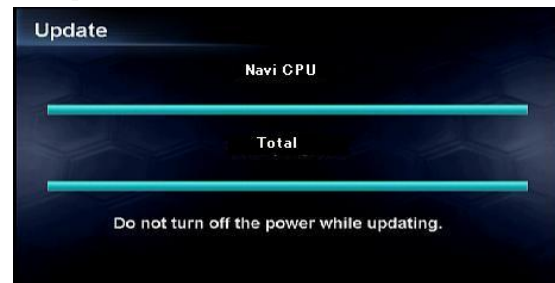
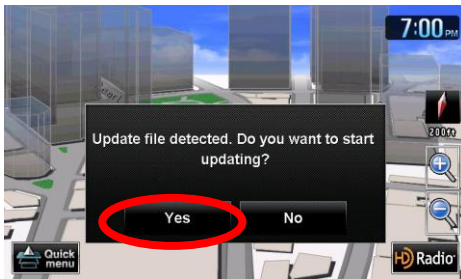
1. Format the SD (or microSD) card as FAT32. (Note - The card must be 256MB or larger.)
2. Unzip the downloaded data then copy the unzipped folder onto the SD card.

[KW-NT700/NT300] "S_V1_7_0014_0300"



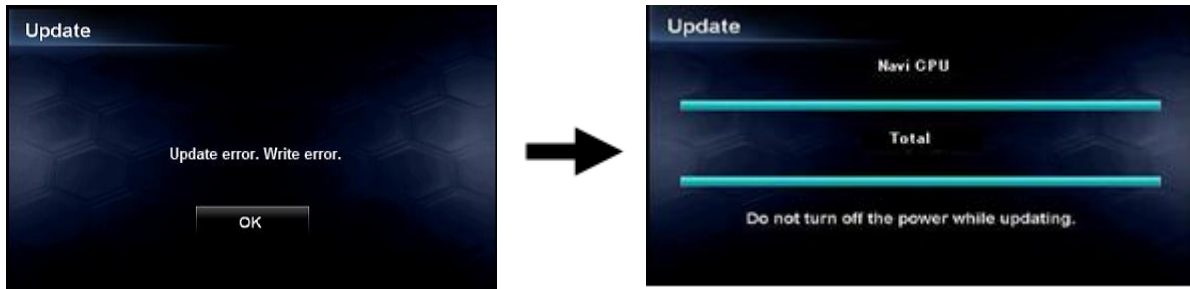
2. Firmware Update Procedure

1. Insert the update SD card into the SD card slot on the unit.
Note – The lock switch of the SD card must be “Un-Locked”.
2. If the following screen appeared, press [Yes] to start the update.



Note – If the update screen will not appear even if you wait a few minutes, please confirm the following 2 items.

- Check if you have downloaded the right firmware that corresponds to your unit name.
- Check if your unit's firmware is already up to date. (Please see chapter 3)



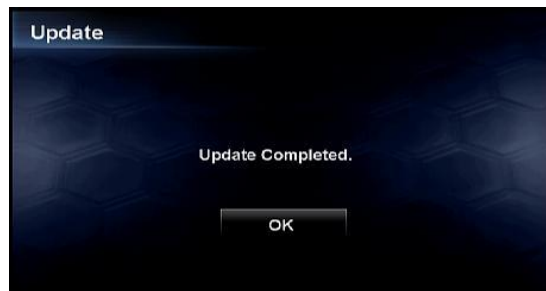
Note – If the update error screen will appear, press [OK].

3. Progress of the update will be displayed during the update process.

The update process will take about 5 minutes to complete.

Note – Do not turn off the power while update is in process.

4. When the update is completed, the following screen will appear. Then press [OK] to restart unit.

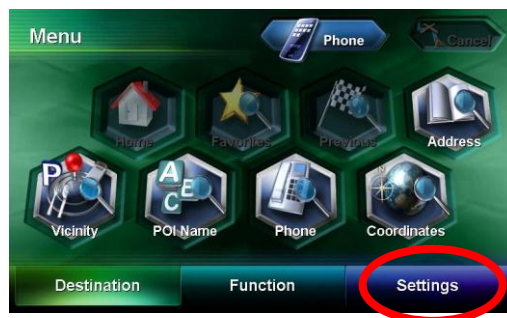


Note – If an error message appears on the screen, use another SD card and re-try the Firmware Update by following the steps above.

5. Remove the update SD card from the unit.

3. Confirm Firmware Update

1. Press the Menu key and press [Settings] button.



2. Press [System Info] button.



3. The current firmware version will be shown at the Software Version.



Please confirm that Software Version is “1.7.0014.0300”.